

TRAVERSES ETC.

LINE	BEARING	DIST.
1-1a	42°48'40"	54.154
7-7a	359°19'55"	20.154
7-7b	185°59'	38.421
8-x	5°59'	9.973
10-9	95°26'45"	17.0
13-13a	275°25'10"	10.0
13-13b	5°59'	10.0
15-39	275°25'10"	3.926
20-20a	251°26'50"	26.759
26-13a	275°25'10"	38.002
34-38b	200°27'10"	18.588
40-39	275°25'10"	34.001

PERMANENT MARKS

STN	BEARING	DIST.	REMARKS
1a-OPM	at	Stn	No.159952 SP169652
7a-OPM	at	Stn	No.155107 SP175558
20a-OPM	at	Stn	No.114301 IS173455

AREA OF NEW ROAD

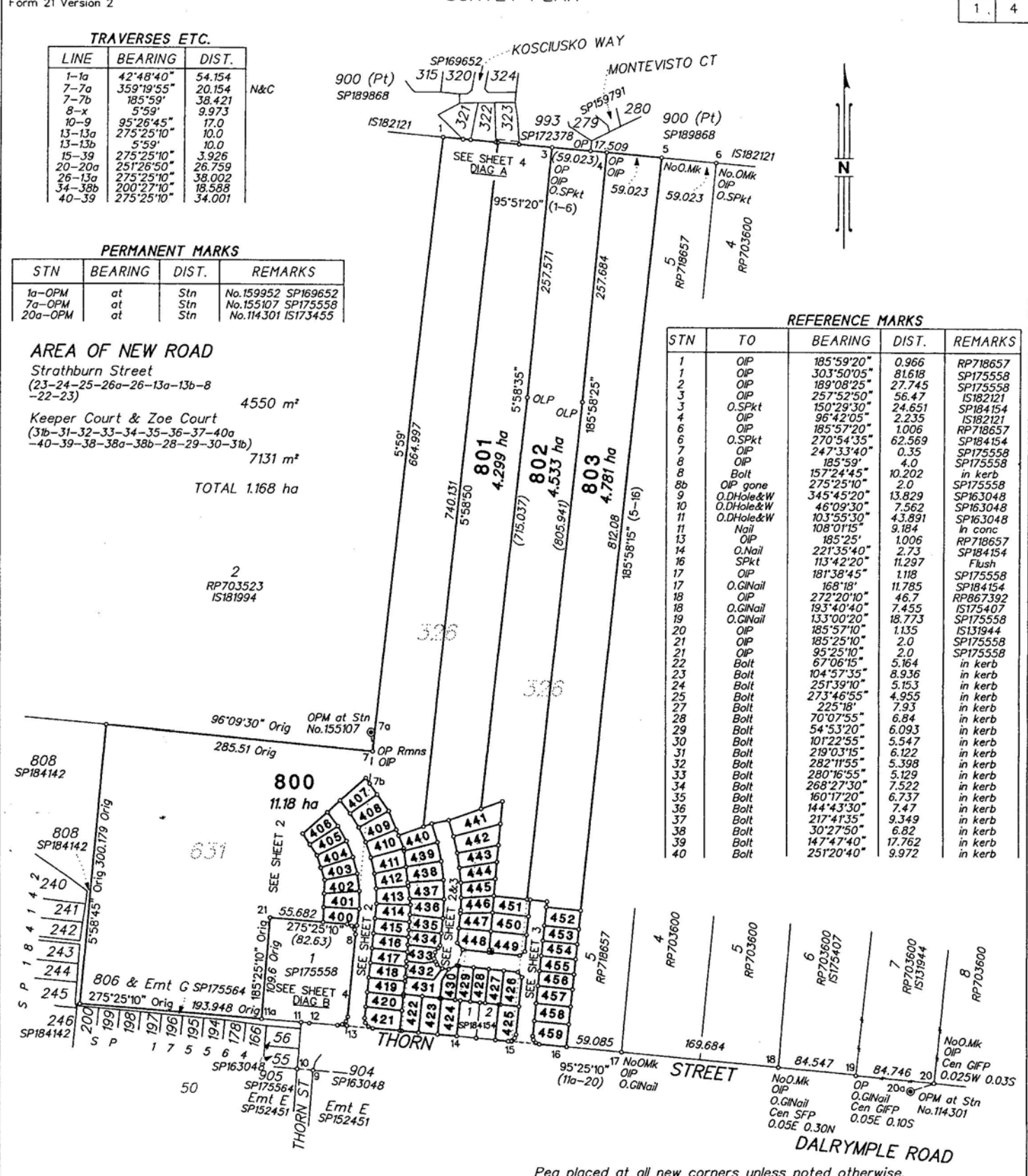
Strathburn Street  
(23-24-25-26a-26-13a-13b-8-22-23) 4550 m<sup>2</sup>

Keeper Court & Zoe Court  
(31b-31-32-33-34-35-36-37-40a-40-39-38-38a-38b-28-29-30-31b) 7131 m<sup>2</sup>

TOTAL 1.168 ha

REFERENCE MARKS

STN	TO	BEARING	DIST.	REMARKS
1	OIP	185°59'20"	0.966	RP718657
1	OIP	303°50'05"	81.618	SP175558
2	OIP	189°08'25"	27.745	SP175558
3	OIP	257°52'50"	56.47	IS182121
4	O.SPkt	150°29'30"	24.651	SP184154
4	OIP	96°42'05"	2.235	IS182121
6	OIP	185°57'20"	1.006	RP718657
6	O.SPkt	270°54'35"	62.569	SP184154
7	OIP	247°33'40"	0.35	SP175558
8	OIP	185°59'	4.0	SP175558
8b	Bolt	157°24'45"	10.202	in kerb
8b	OIP gone	275°25'10"	2.0	SP175558
9	O.D.Hole&W	345°45'20"	13.829	SP163048
10	O.D.Hole&W	46°09'30"	7.562	SP163048
11	O.D.Hole&W	103°55'30"	43.891	SP163048
11	Nail	108°01'15"	9.184	in conc
11	OIP	185°25'	1.006	RP718657
14	O.Nail	221°35'40"	2.73	SP184154
16	SPkt	113°42'20"	11.297	Flush
17	OIP	181°38'45"	1.118	SP175558
17	O.G.Nail	168°18'	11.785	SP184154
18	OIP	272°20'10"	46.7	RP867392
18	O.G.Nail	193°40'40"	7.455	IS175407
19	O.G.Nail	133°00'20"	18.773	SP175558
20	OIP	185°57'10"	1.135	IS11944
21	OIP	185°25'10"	2.0	SP175558
21	OIP	95°25'10"	2.0	SP175558
22	Bolt	67°06'15"	5.164	in kerb
23	Bolt	104°57'35"	8.936	in kerb
24	Bolt	251°39'10"	5.153	in kerb
25	Bolt	273°46'55"	4.955	in kerb
27	Bolt	225°18'	7.93	in kerb
28	Bolt	70°07'55"	6.84	in kerb
29	Bolt	54°53'20"	6.093	in kerb
30	Bolt	101°22'55"	5.547	in kerb
31	Bolt	219°03'15"	6.122	in kerb
32	Bolt	282°11'55"	5.398	in kerb
33	Bolt	280°16'55"	5.129	in kerb
34	Bolt	268°27'30"	7.522	in kerb
35	Bolt	160°17'20"	6.737	in kerb
36	Bolt	144°43'30"	7.47	in kerb
37	Bolt	217°47'35"	9.349	in kerb
38	Bolt	30°27'50"	6.82	in kerb
39	Bolt	147°47'40"	17.762	in kerb
40	Bolt	251°20'40"	9.972	in kerb

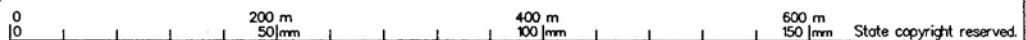


K & A Surveys Pty Ltd ACN069888884 hereby certify that the land comprised in this plan was surveyed by the corporation, by Michael James Molyneux Byrne, Surveying Graduate for whose work the corporation accepts responsibility, under supervision of Constantine George Karavas, Cadastral Surveyor and that the plan is accurate, that the said survey was performed in accordance with the Survey and Mapping Infrastructure Act 2003 and the Surveyors Act 2003 and associated Regulations and Standards and that the said survey was completed on 19/07/07.



Director  
Director  
Date

25-7-07



PLAN OF LOTS 400 - 459  
& LOTS 800 - 803

Cancelling Lots 2 & 4 on RP718657, Lot 3 on SP184154 & Lot 2 on SP175558

PARISH: COONAMBELAH COUNTY: Elphinstone

Meridian: MGA94 Zone 55 see SP175558

F/N's: No

Scale: 1 : 4000

Format: STANDARD

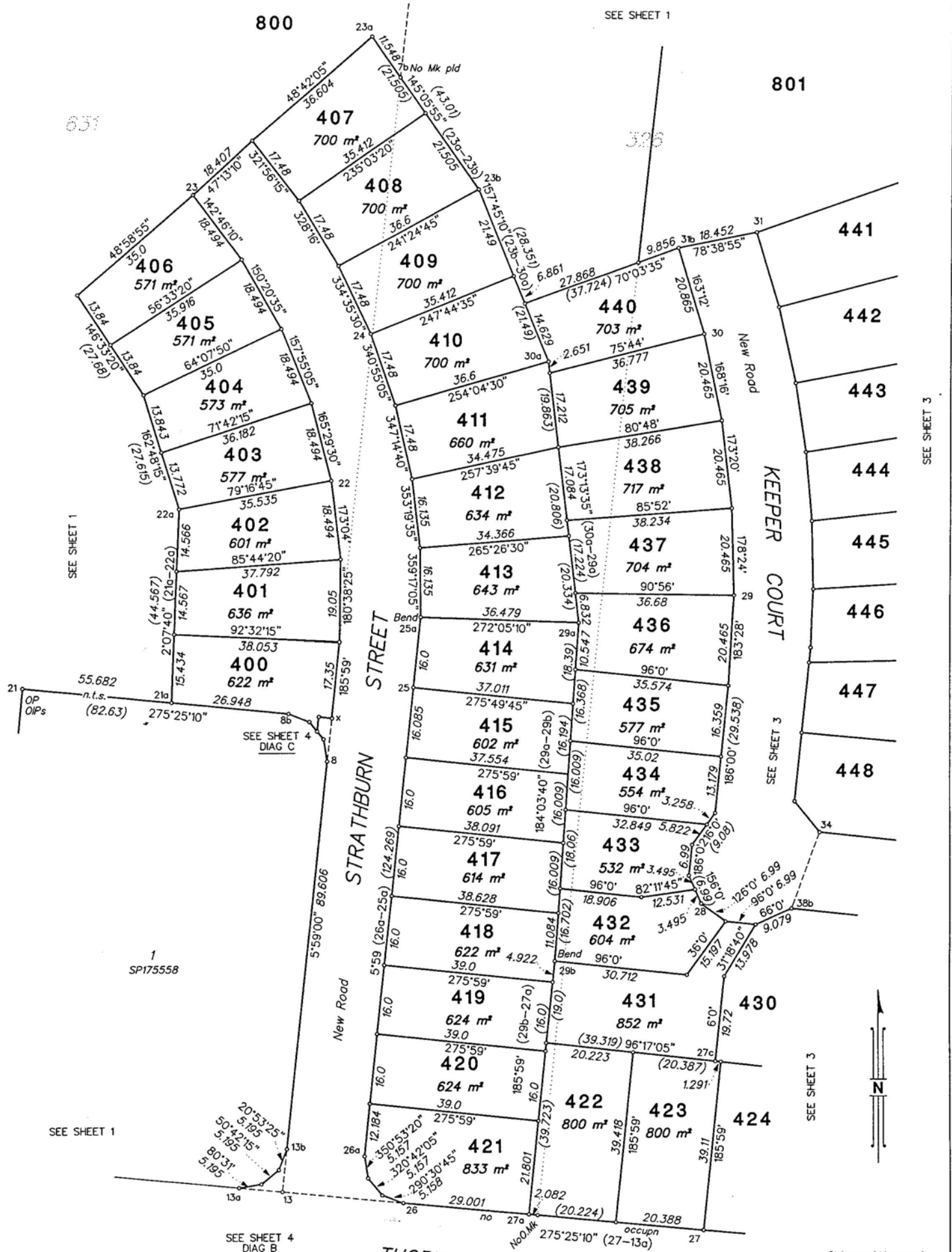


SP184183

Plan Status:

Peg placed at all new corners unless noted otherwise.  
Original information compiled from plan SP175558 in the Department of Natural Resources and Water.

State copyright reserved.



SEE SHEET 3

SEE SHEET 1

SEE SHEET 4  
DIAG C

SEE SHEET 3

SEE SHEET 3

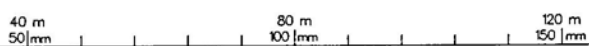
SEE SHEET 4  
DIAG B

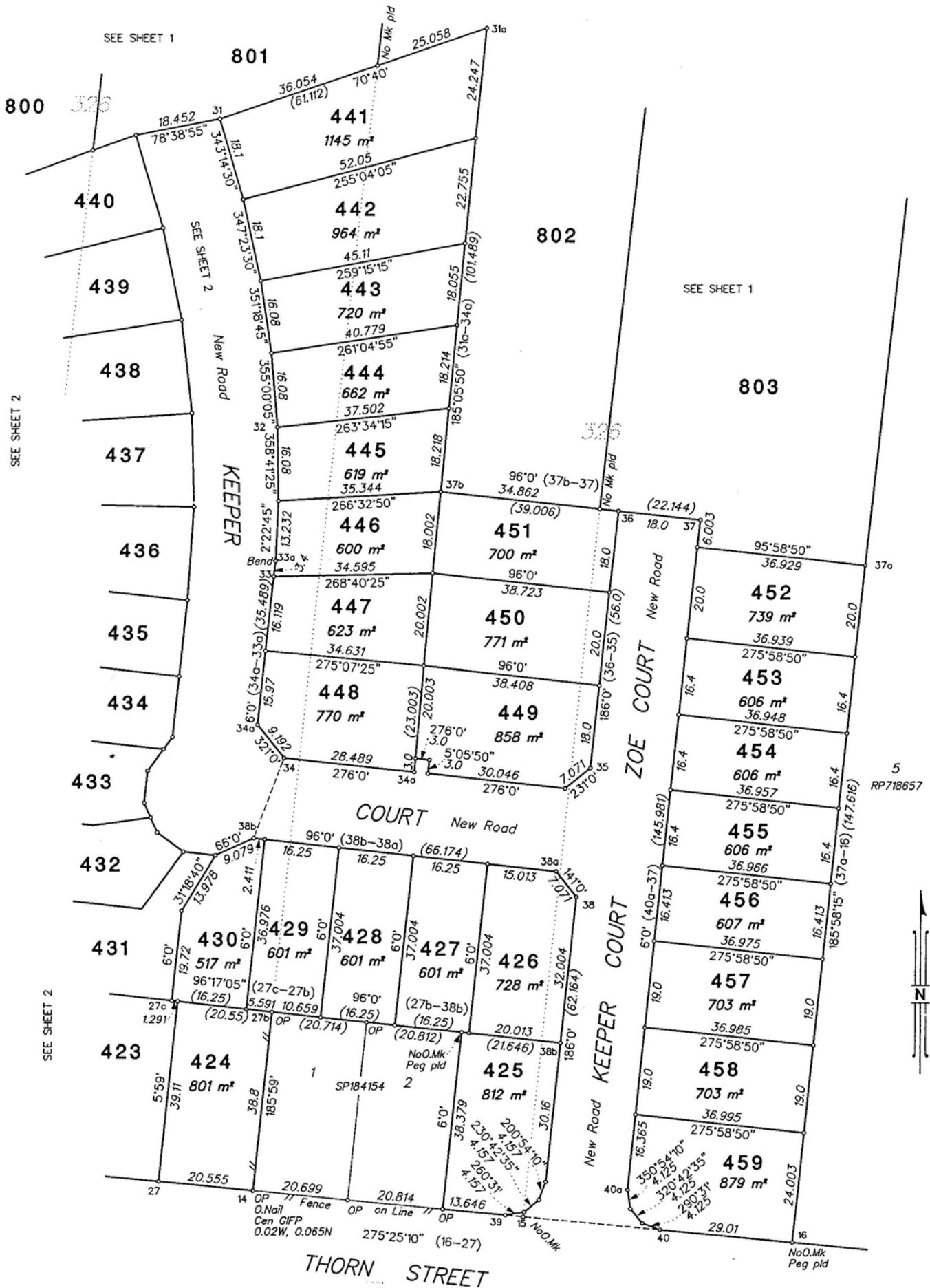
SEE SHEET 1

State copyright reserved.

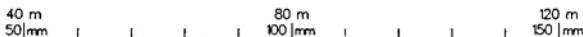
Insert Plan Number  
SP184183

Scale 1 : 800



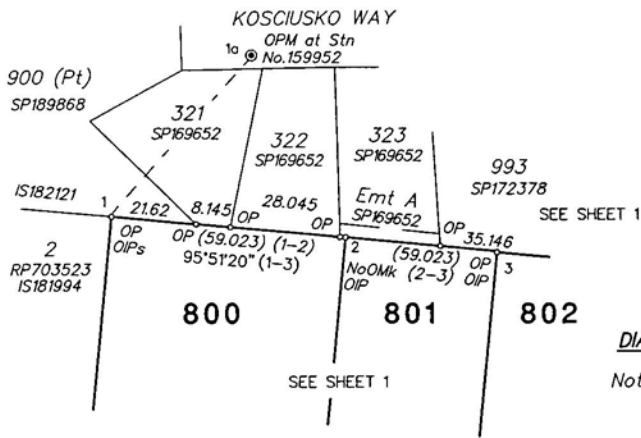


Scale 1 : 800

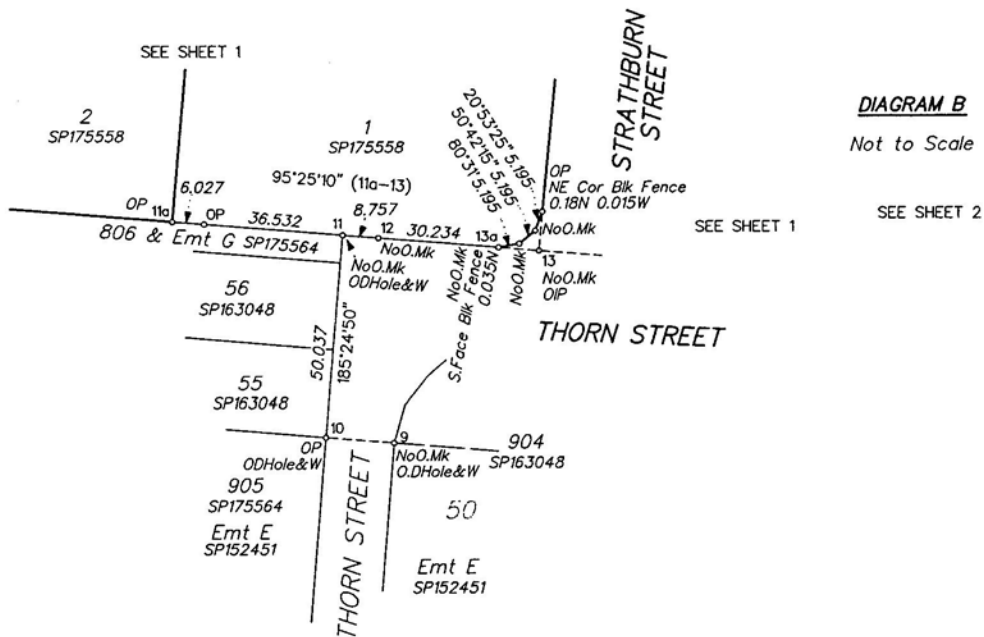
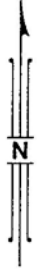


State copyright reserved.

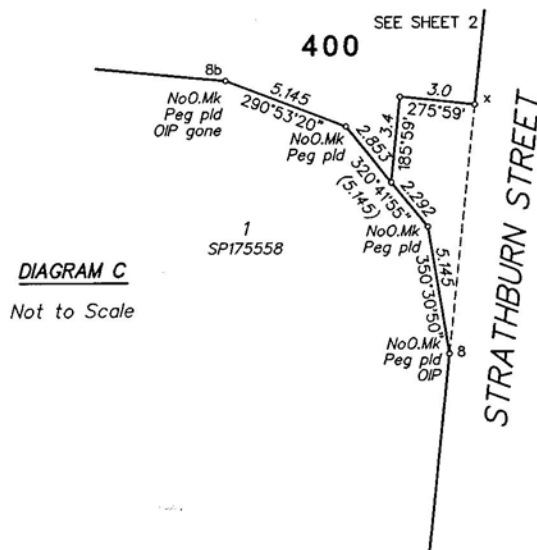
Insert Plan Number SP184183



**DIAGRAM A**  
Not to Scale



**DIAGRAM B**  
Not to Scale



**DIAGRAM C**  
Not to Scale